

FOR SALE or LEASE

Southwest Industrial Building

1313 S Young St, Wichita KS

BROKERAGE
CONNECTION

InSite
REAL ESTATE GROUP



PROPERTY INFO

Sale Price: \$575,000
Lease Rate: \$4.25/SF
Lease Type: Industrial Gross
Building Size: 16,400 SF
Lot Size: 38,506 SF
Zoning: Limited Industrial
Taxes: \$8,146.84



- ✓ (3) 10 ft. Drive In Overhead Doors
- ✓ 12-14 ft. Ceiling Height
- ✓ Approx. 1,800 SF of Office Space: Large Sales/Showroom Area, 4 Offices, Kitchenette, Restrooms & Shower, and Mezzanine Storage
- ✓ Located in Desirable Southwest Wichita Industrial Area Near Kellogg (US-54) & I-235
- ✓ 3-Phase Electric
- ✓ Pole Signage

Carl Hebert, CCIM
cjhebert@insitere.com

Chris Abdayem
chris@insitere.com

(316) 618-1100

608 W. Douglas #106, Wichita KS

InSite
REAL ESTATE GROUP

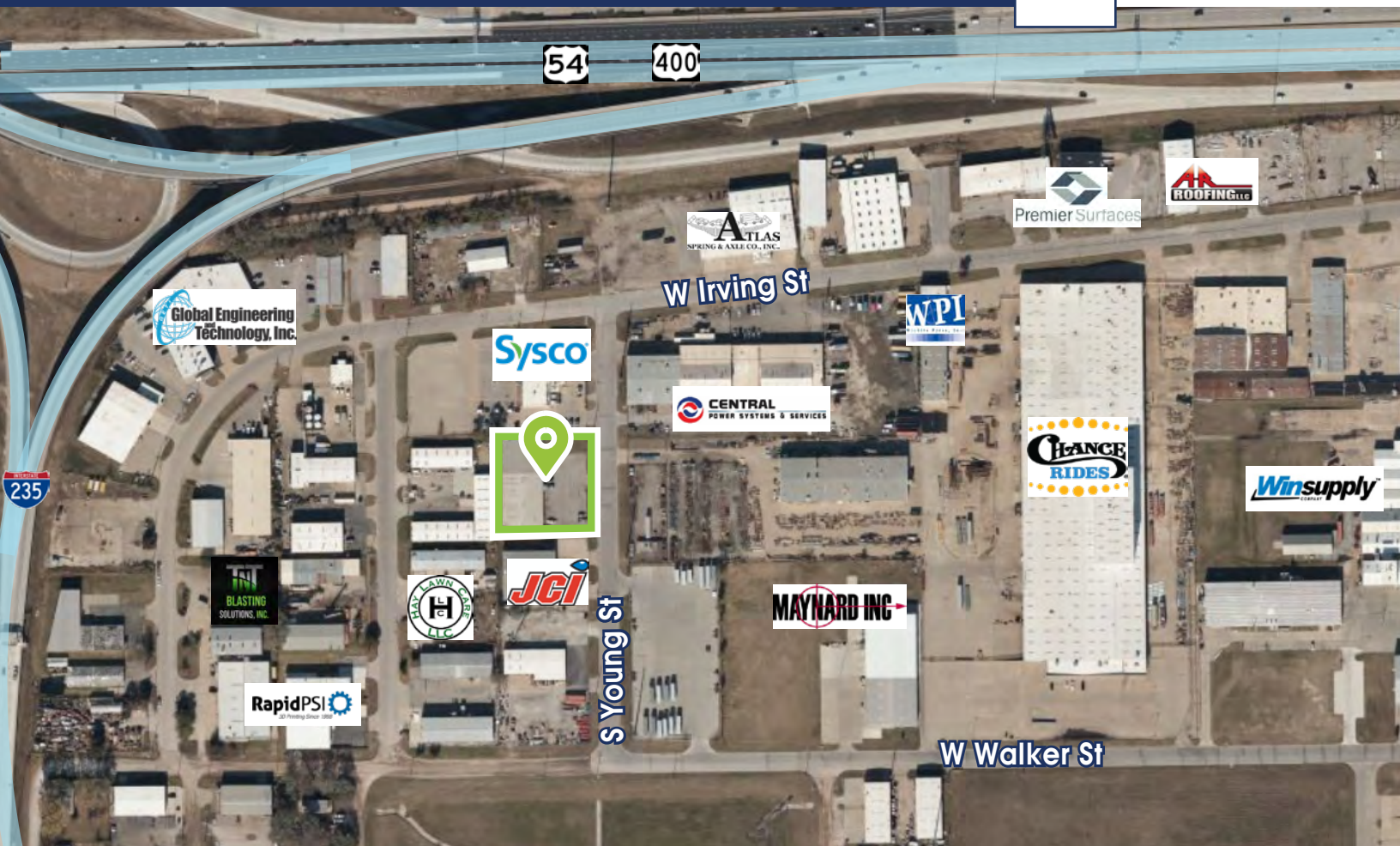
FOR SALE or LEASE

Southwest Industrial Building

1313 S Young St, Wichita KS

BROKERAGE
CONNECTION

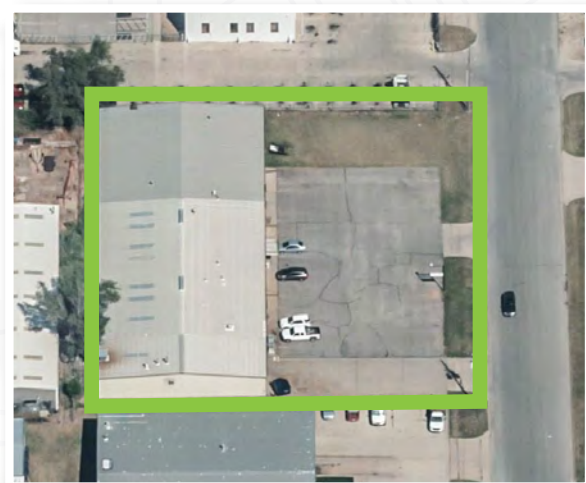
InSite
REAL ESTATE GROUP



AREA INFO

Area Neighbors

Chance Rides Manufacturing, A-R Roofing, Premier Surfaces, Atlas Spring & Axle, Wichita Press Inc., Central Power Systems & Services, Sysco Foods Wichita, JCI Industries, TNT Machine, Maynard Inc., Hay Lawn Care, Rapid PSI, and more!



Carl Hebert, CCIM
cjhebert@insitere.com

Chris Abdayem
chris@insitere.com

(316) 618-1100

608 W. Douglas #106, Wichita KS

InSite
REAL ESTATE GROUP